

Unit Forgings Railroad Product Catalog

Unit Forgings Railway Products Group

P.O. Box 340350

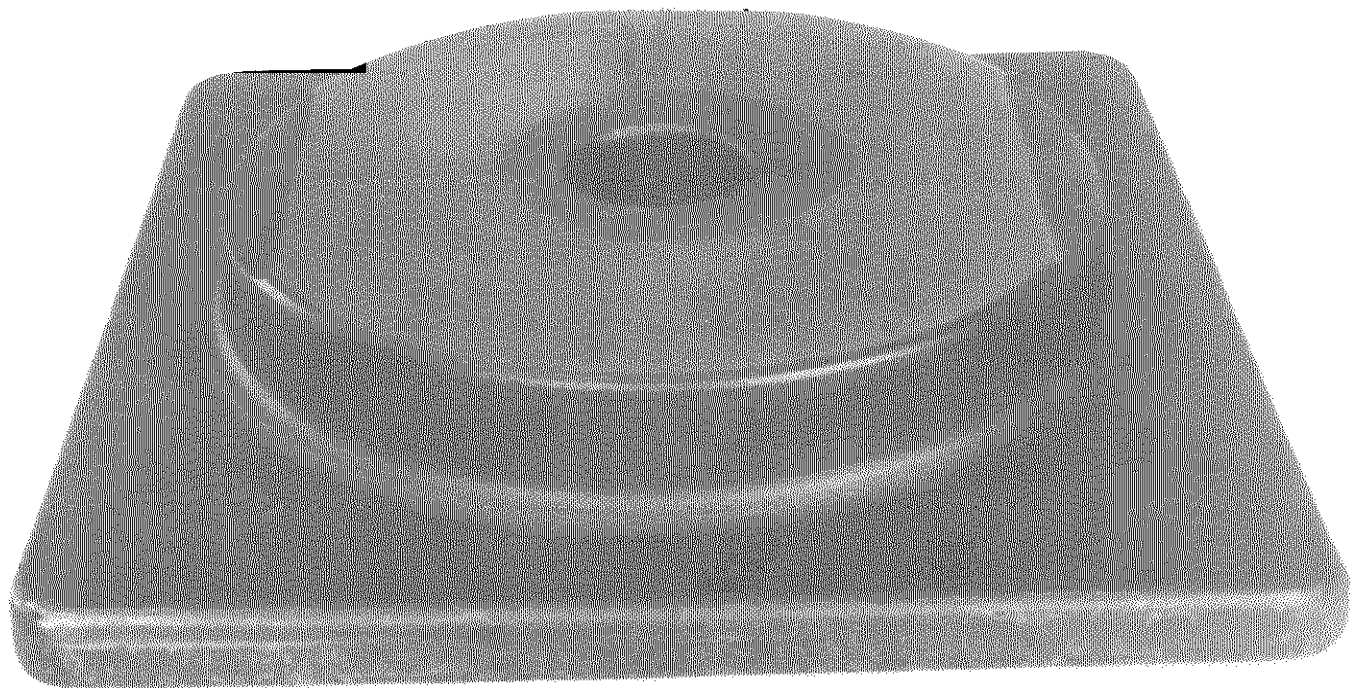
West Allis, WI

53234-0350

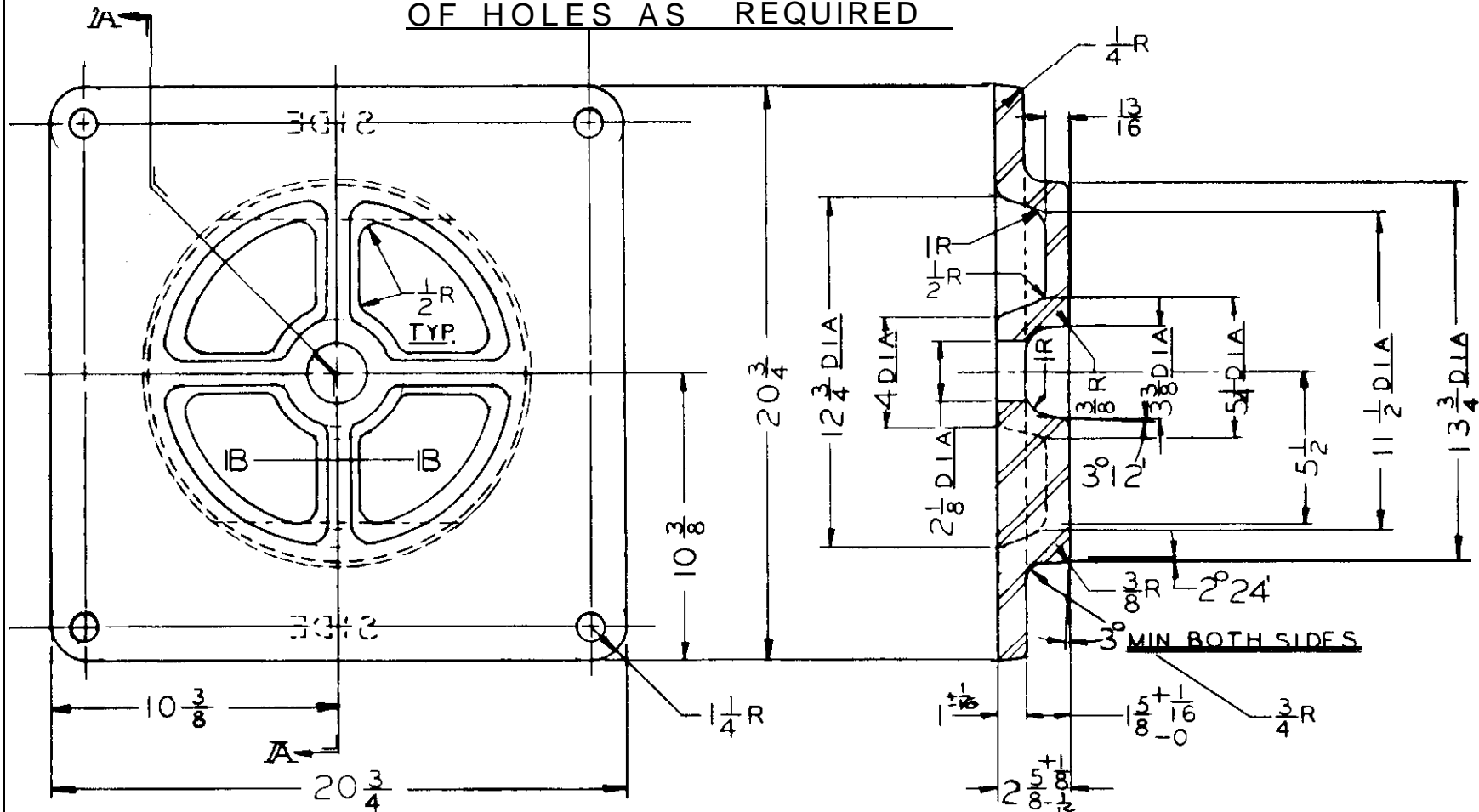
Phone: (414) 545-3000 X219

Fax: (414) 545-6318

Center plates are available in 12", 14", 15" & 16" diameters forged from 1030 steel. Flange thickness from 3/4" to 1 1/4". Plates can be machined and drilled to customer specification.

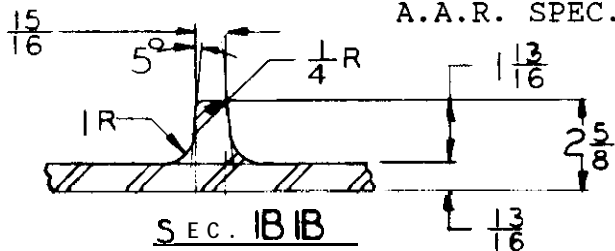


NUMBER SIZE & SPACING
OF HOLES AS REQUIRED



C-1030 STEEL

FLATNESS & SMOOTHNESS PER LATEST
A.A.R. SPEC. OR AS REQUIRED



SEC. AA

ENGINEERED

QUALITY

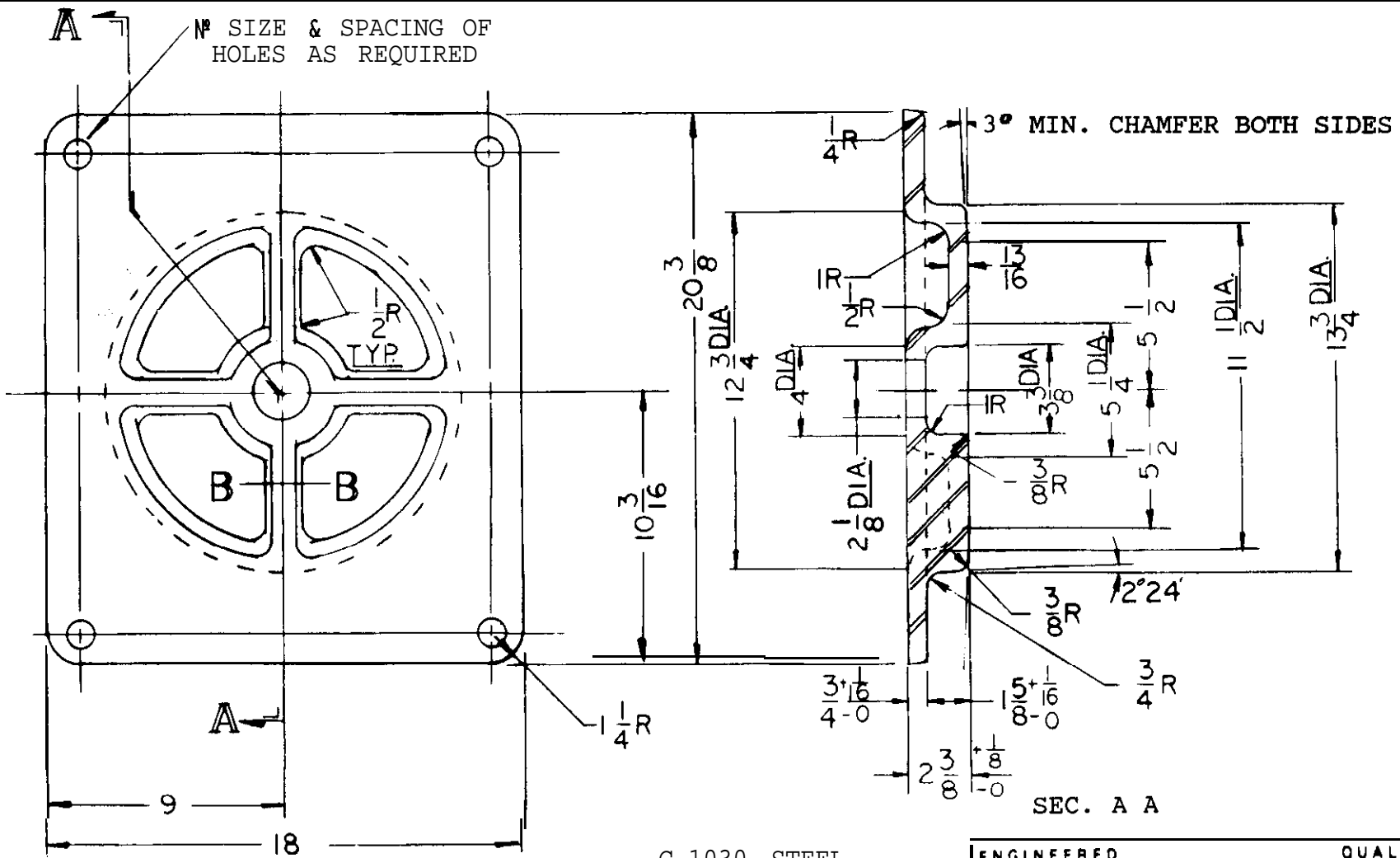


UNIT DROP FORGE CO., INC.

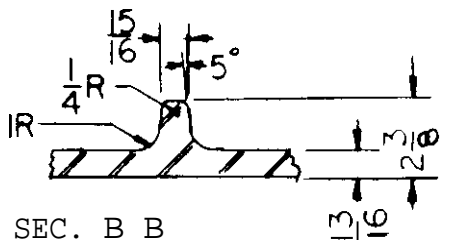
WEST ALLIS

WISCONSIN

MD-21741



C-1030 STEEL
 HEAT TREATMENT
 FLATNESS & SMOOTHNESS
 PER LATEST A.A.R. SPEC.
 OR AS REQUIRED

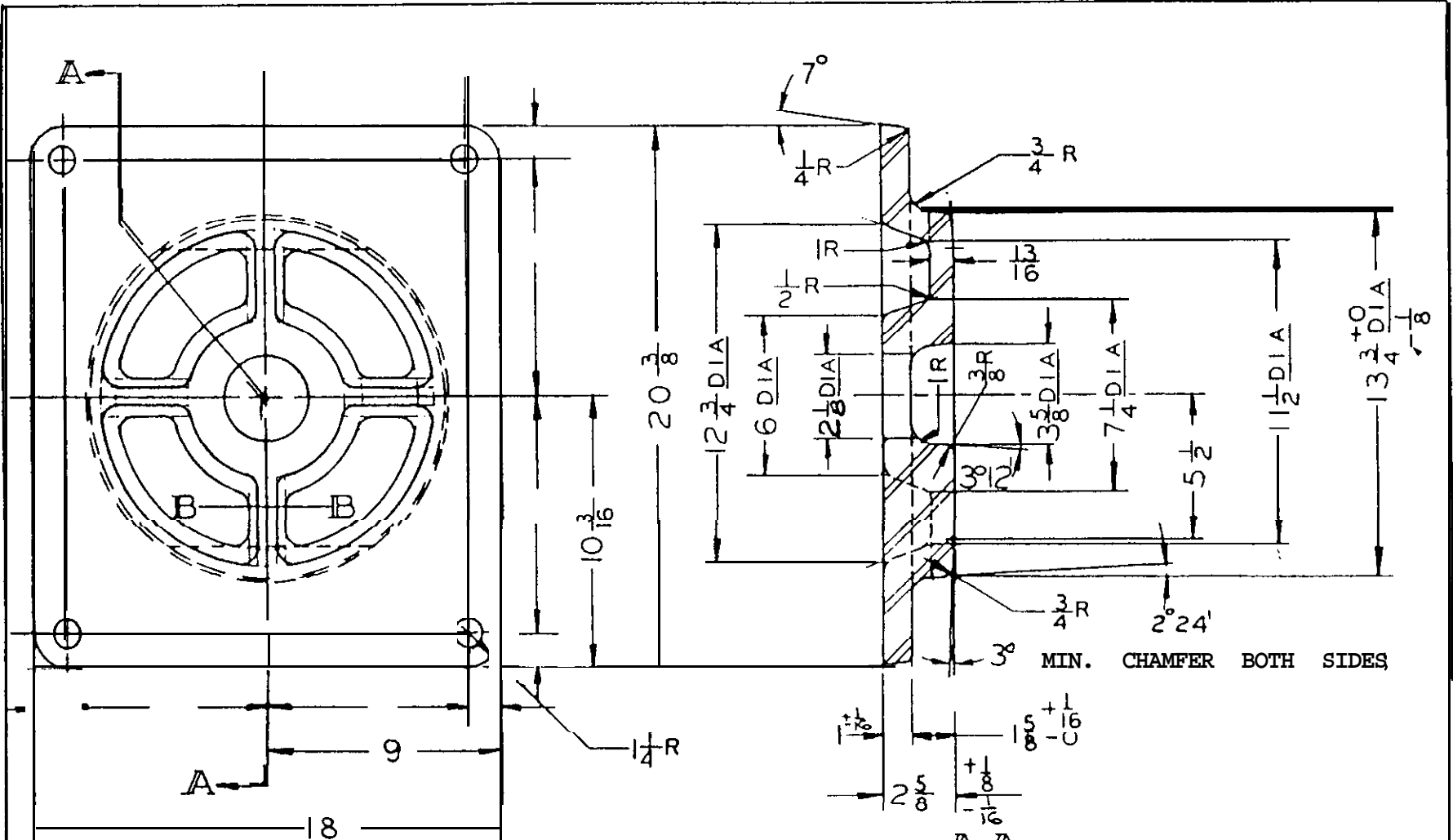


ENGINEERED QUALITY

U UNIT DROP FORGE CO., INC.

WEST ALLIS WISCONSIN

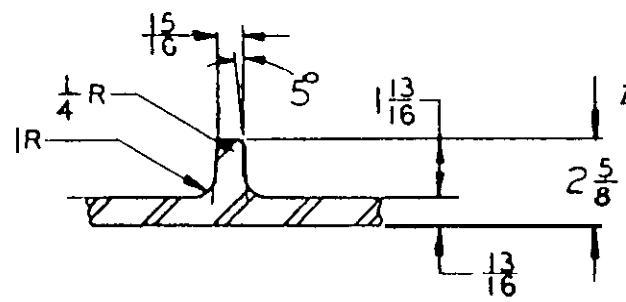
MD-21 860-NEW CARS
 MD-21687.REPAIRS




SEC. A A

C-1030 STEEL

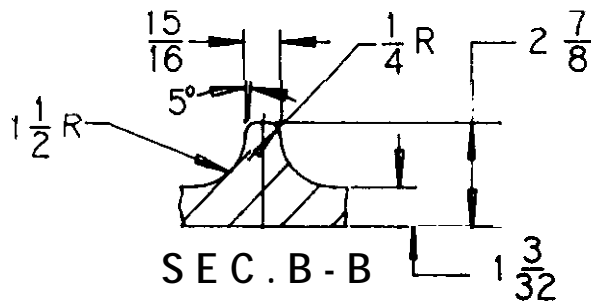
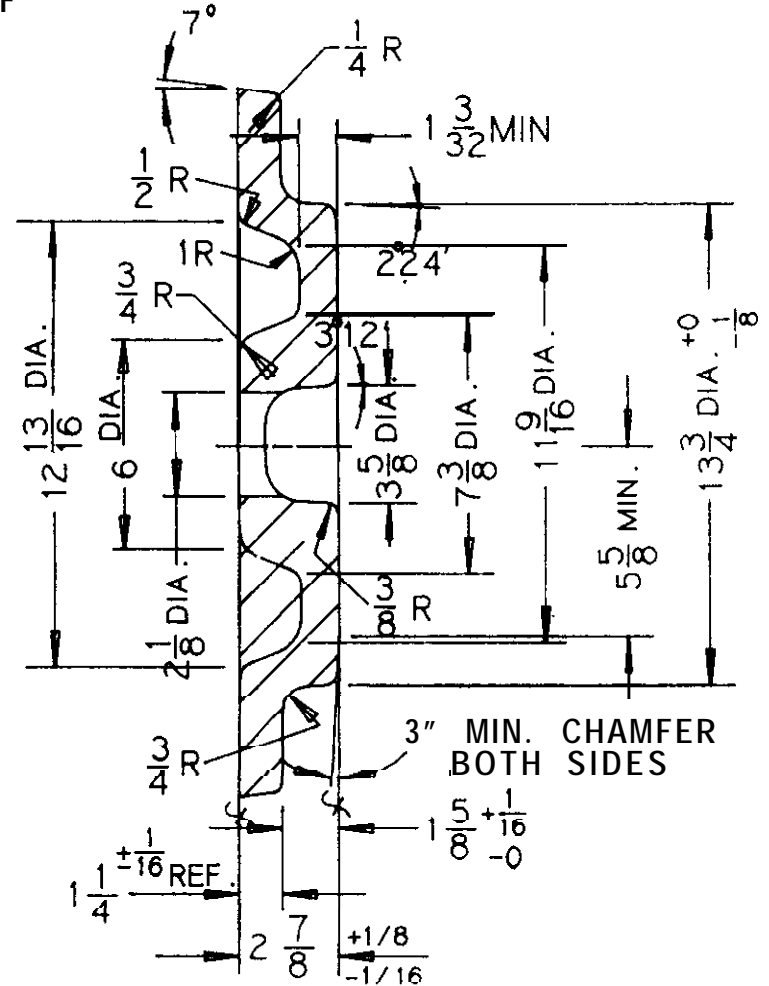
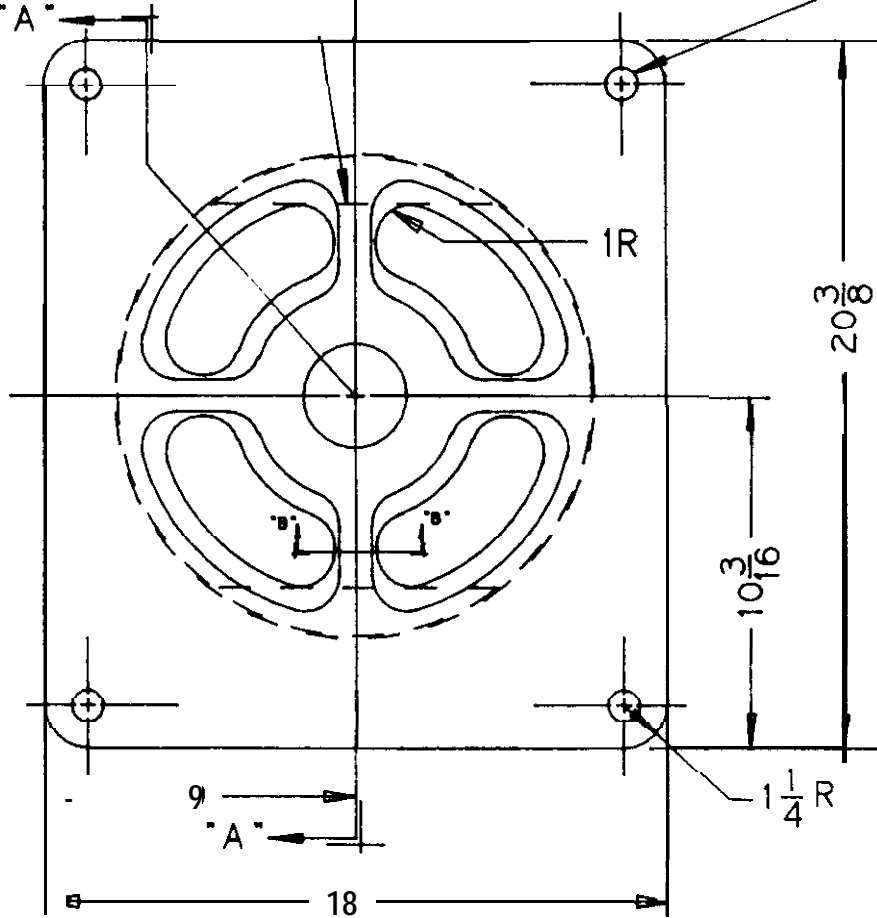
HEAT TREATMENT, FLATNESS
& SMOOTHNESS PER LATEST
A.A.R. SPEC. OR AS REQUIRED




 UNIT DROP FORGE CO., INC.
 WEST ALLIS WISCONSIN
MD-22793

4 RIBS EQUALLY SPACED AS SHOWN

NO. SIZE AND SPACING OF HOLES AS REQUIRED



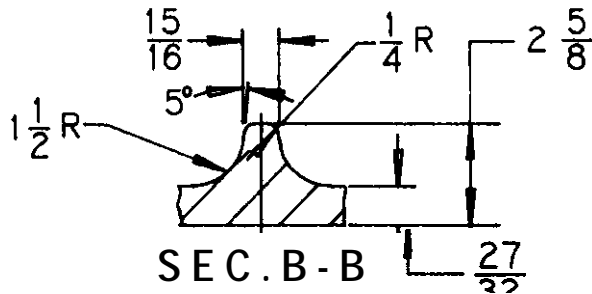
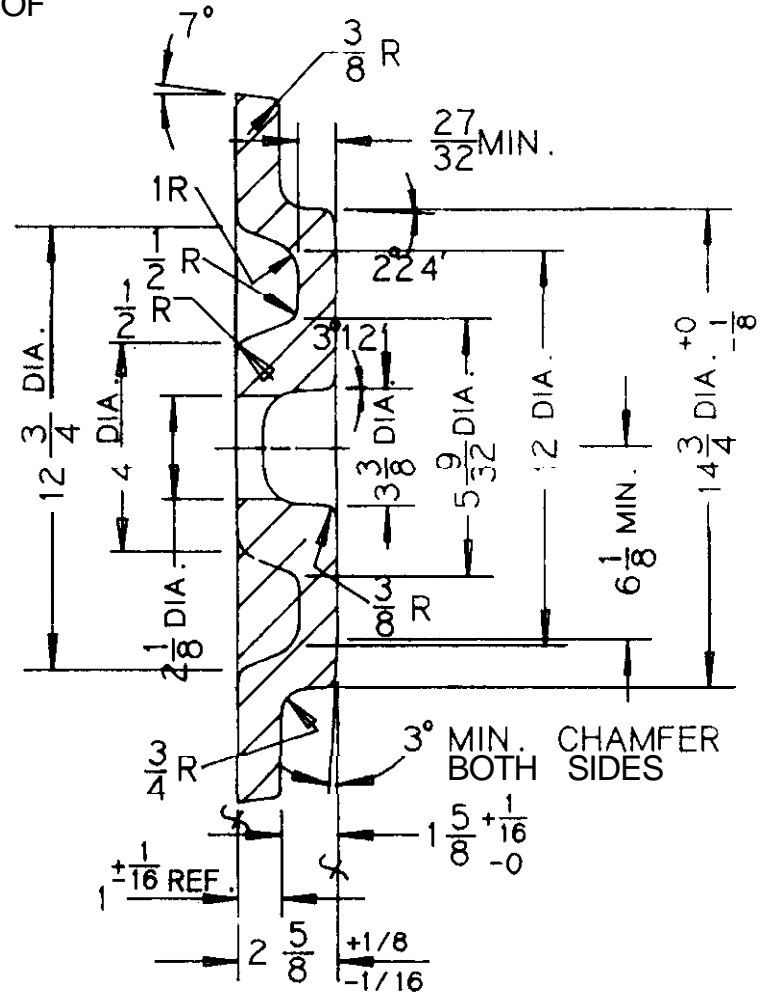
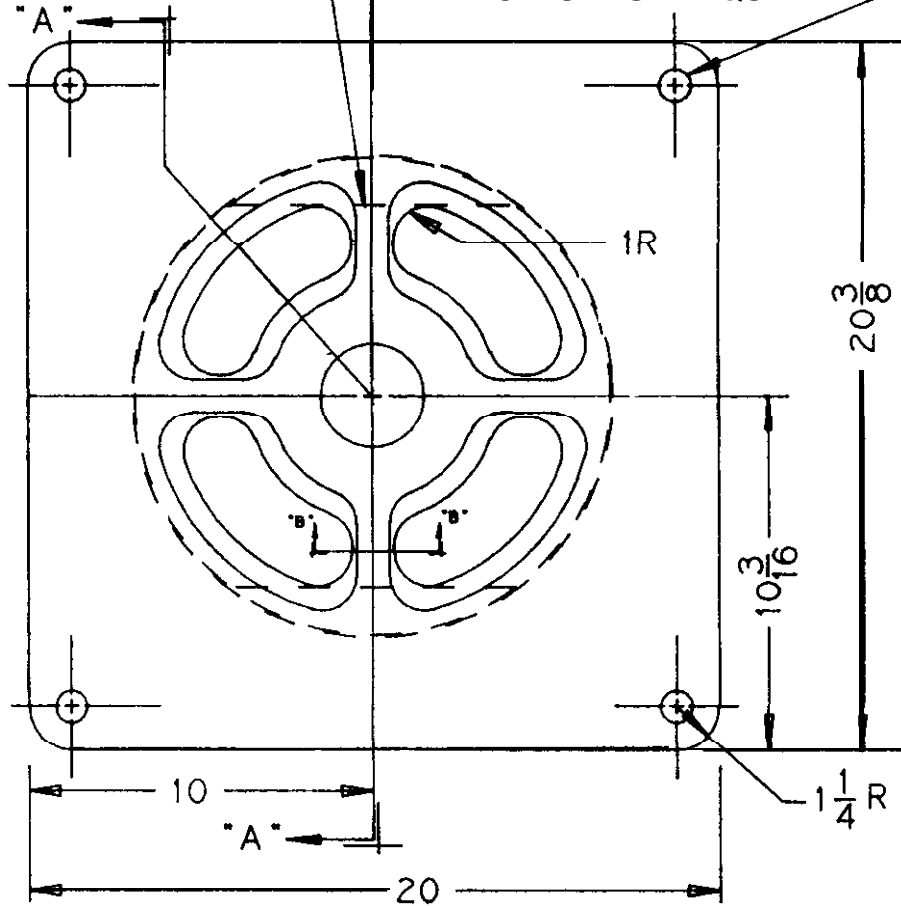
C- 1030 STEEL

HEAT TREATMENT, FLATNESS, AND SMOOTHNESS PER LATEST A.A.R. SPEC. OR AS REQUIRED

| | |
|---------------------------|-----------|
| ENGINEERED | QUALITY |
| | |
| UNIT DROP FORGE CO., INC. | |
| WEST ALLIS | WISCONSIN |
| MD-24395 | |

4 RIBS EQUALLY SPACED AS SHOWN

NO SIZE AND SPACING OF HOLES AS REQUIRED



C-1030 STEEL

HEAT TREATMENT, FLATNESS, AND SMOOTHNESS PER LATEST A.A.R. SPEC. OR AS REQUIRED

ENGINEERED

QUALITY



UNIT DROP FORGE CO., INC

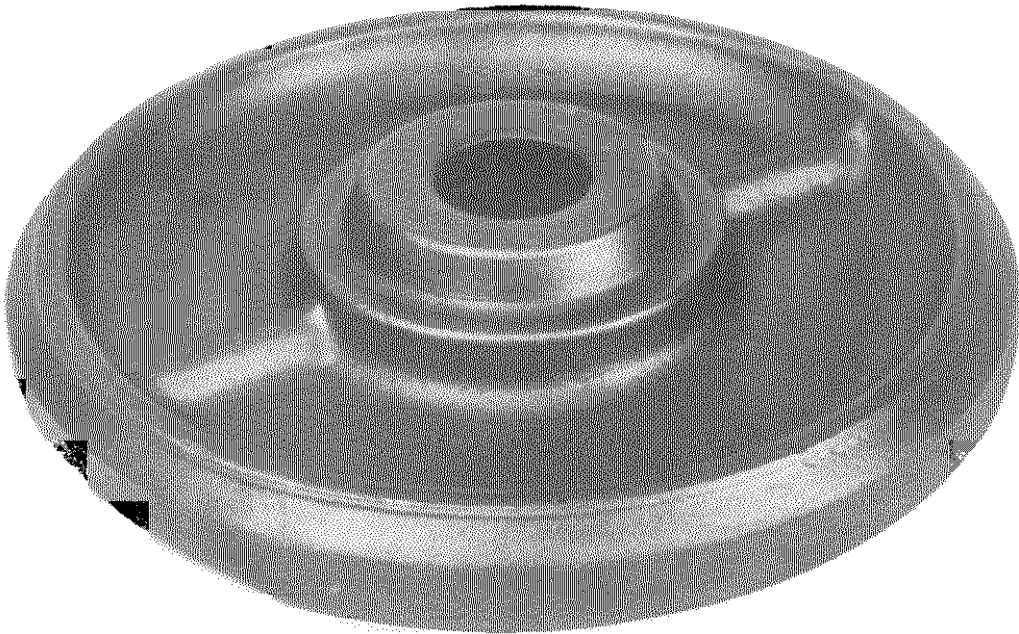
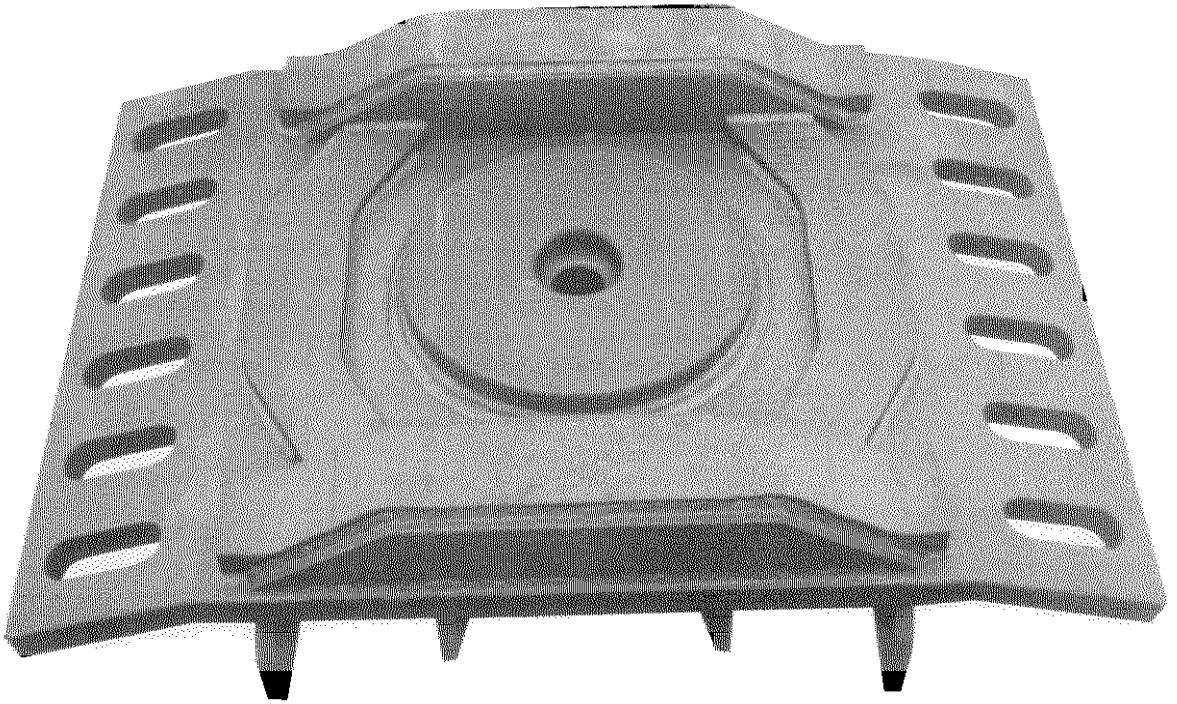
WEST ALLIS

WISCONSIN

MD-249 17

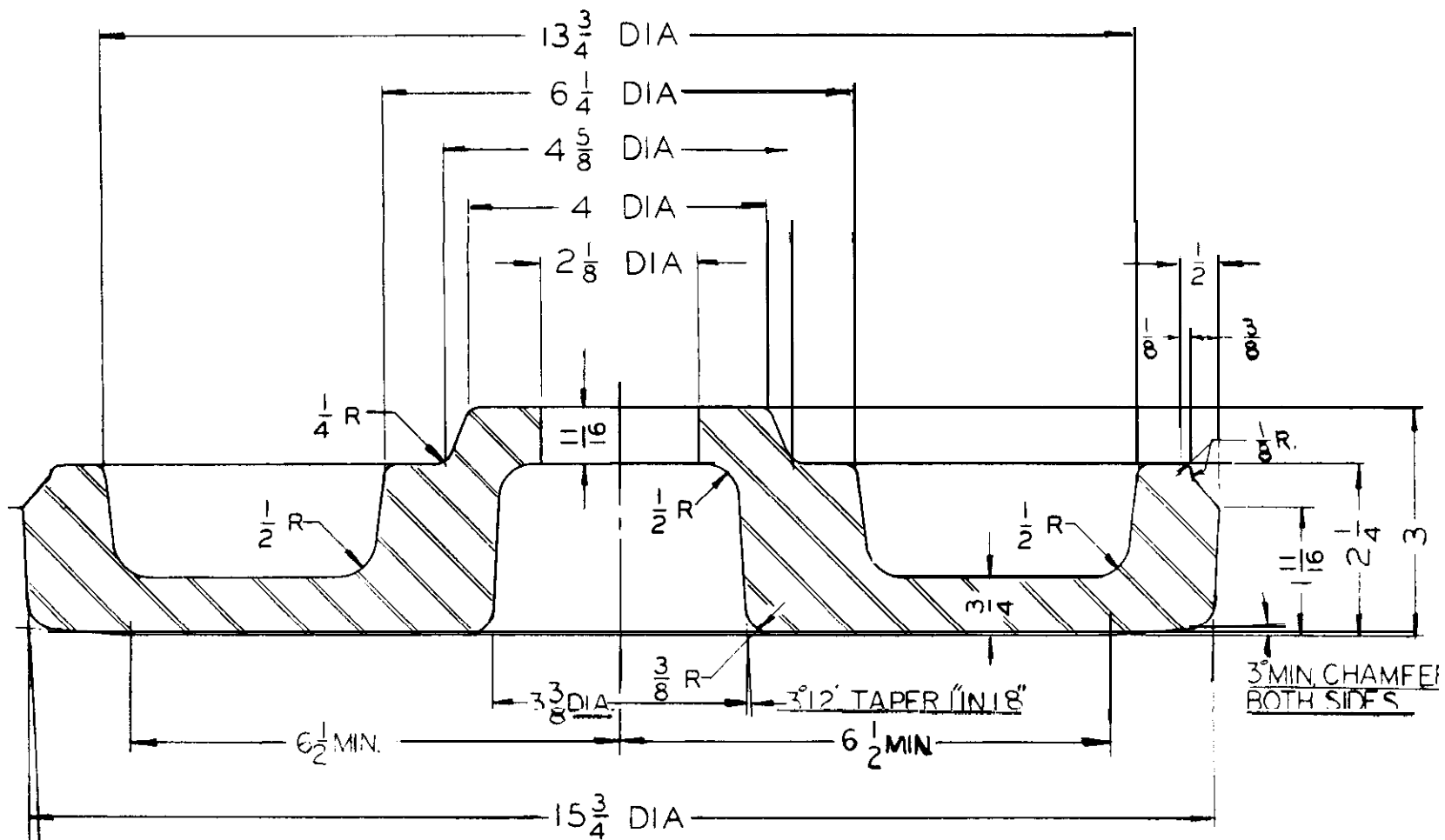
Assemblies

Fit any body bolster for both fixed and sliding sill under-frames.



Bowls

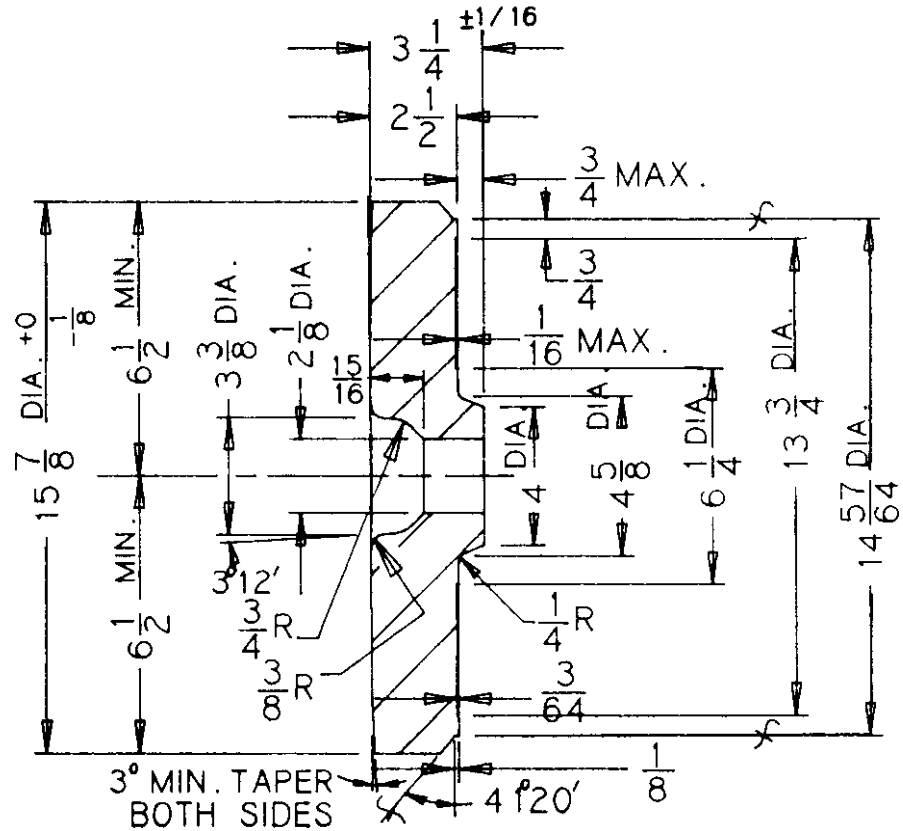
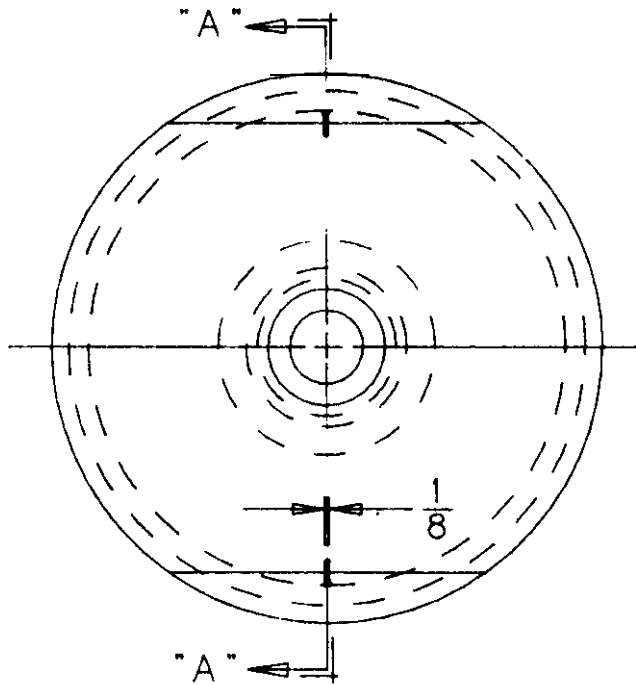
Solid or hollow for 12", 14" and 16" bolster pockets. Peripheral weld are 3/8" or 3/4" concave radii as required.



2° 24'
 TAPER
 1" IN 24'

STEEL: C-1030
 DROP FORGED
 HEAT TREATMENT IF REQ'D.

| | |
|---------------------------|-----------|
| ENGINEERED | QUALITY |
| | |
| UNIT DROP FORGE CO., INC. | |
| WEST ALLIS | WISCONSIN |
| MD-19851 | |



C- 1030 STEEL

SEC. A-A

HEAT TREATMENT, FLATNESS,
AND SMOOTHNESS PER LATEST
A.A.R.SPEC.OR AS REWIRED

ENGINEERED

QUALITY



UNIT DROP FORGE

CO., INC

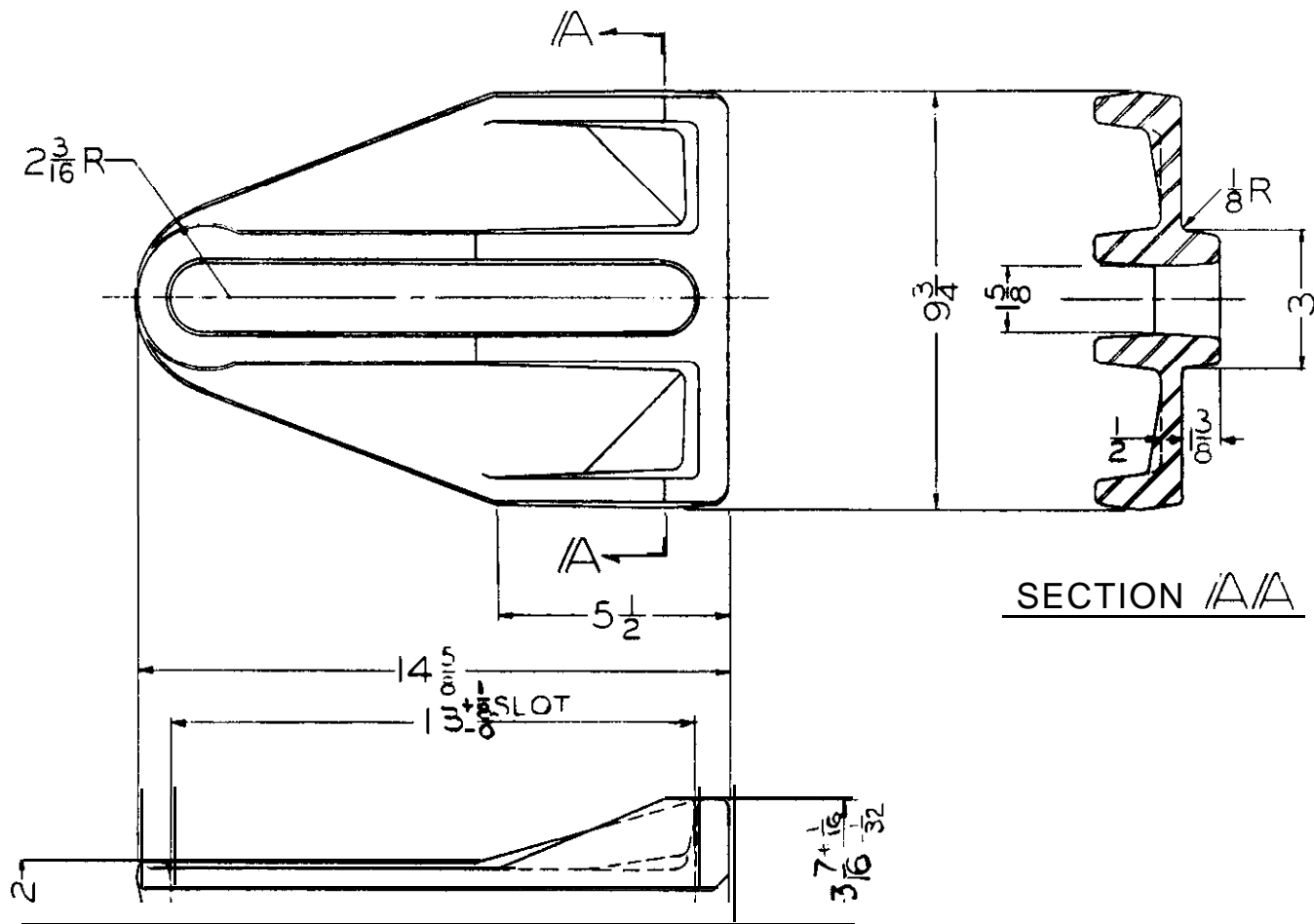
WEST ALLIS

WISCONSIN


MD-22849

Separable front & rear draft lugs are forged to withstand the loads experienced in today's rugged freight car service.





STEEL C-1030
DROP FORGED

| | |
|---|-----------|
| ENGINEERED | QUALITY |
|  UNIT DROP FORGE CO., INC. | |
| WEST ALLIS | WISCONSIN |
| <u>FRONT DRAFT</u> <u>GEAR STOP</u> | |
| M-26072P | |

UNIT FORGINGS QUALITY ASSURANCE COMMITMENT

A state-of-the-art computerized manufacturing order entry system insures accurate processing and conformance to order specifications.

Chemistry verification is performed on all incoming raw steel.

Established quality assurance management systems including Statistical Process Control (SPC) that monitor consistency of our processes and conformance to exact specifications.

Providing for the prevention, early detection and immediate corrective action of non-conforming conditions.

The program assures that production operations, test methods and final inspection are carried out using equipment and procedures that satisfy specifications.